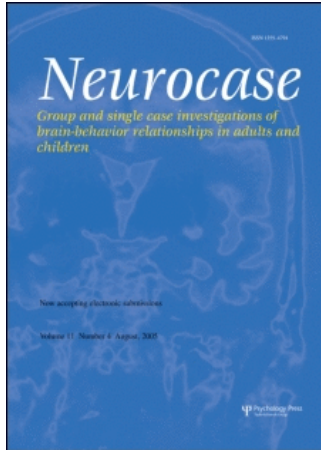


This article was downloaded by:[Swets Content Distribution]  
On: 27 November 2007  
Access Details: [subscription number 768307933]  
Publisher: Psychology Press  
Informa Ltd Registered in England and Wales Registered Number: 1072954  
Registered office: Mortimer House, 37-41 Mortimer Street, London W1T 3JH, UK



## Neurocase

Publication details, including instructions for authors and subscription information:  
<http://www.informaworld.com/smpp/title~content=t713658146>

### The Fronto-Parietal Network and Top-Down Modulation of Perceptual Grouping

Shihui Han<sup>ab</sup>; Glyn W. Humphreys<sup>c</sup>

<sup>a</sup> Department of Psychology, Peking University, Beijing, P. R. China

<sup>b</sup> Functional Imaging Center, Academy for Advanced Interdisciplinary Studies, Peking University, Beijing, P. R. China

<sup>c</sup> Behavioral Brain Sciences, School of Psychology, University of Birmingham, Birmingham, UK

First Published on: 30 October 2007

To cite this Article: Han, Shihui and Humphreys, Glyn W. (2007) 'The Fronto-Parietal Network and Top-Down Modulation of Perceptual Grouping', *Neurocase*, 13:4, 278 - 289

To link to this article: DOI: 10.1080/13554790701649930

URL: <http://dx.doi.org/10.1080/13554790701649930>

PLEASE SCROLL DOWN FOR ARTICLE

Full terms and conditions of use: <http://www.informaworld.com/terms-and-conditions-of-access.pdf>

This article maybe used for research, teaching and private study purposes. Any substantial or systematic reproduction, re-distribution, re-selling, loan or sub-licensing, systematic supply or distribution in any form to anyone is expressly forbidden.

The publisher does not give any warranty express or implied or make any representation that the contents will be complete or accurate or up to date. The accuracy of any instructions, formulae and drug doses should be independently verified with primary sources. The publisher shall not be liable for any loss, actions, claims, proceedings, demand or costs or damages whatsoever or howsoever caused arising directly or indirectly in connection with or arising out of the use of this material.

# The Fronto-Parietal Network and Top-Down Modulation of Perceptual Grouping

SHIHUI HAN<sup>1,2</sup> and GLYN W. HUMPHREYS<sup>3</sup>

<sup>1</sup>*Department of Psychology, Peking University, Beijing, P. R. China*

<sup>2</sup>*Functional Imaging Center, Academy for Advanced Interdisciplinary Studies, Peking University, Beijing, P. R. China*

<sup>3</sup>*Behavioral Brain Sciences, School of Psychology, University of Birmingham, Birmingham, UK*

We examined the role of the fronto-parietal cortex in top-down modulation of perceptual grouping by proximity, collinearity, and similarity, by recording event related brain potentials from two patients with fronto-parietal lesions and eight controls. We found that grouping by proximity and collinearity in the controls was indexed by short-latency activities over the medial occipital cortex and long-latency activities over the occipito-parietal areas. For the patients, however, both the short- and long-latency activities were eliminated or weakened. The results suggest that the fronto-parietal network is involved in facilitation of both the early and late grouping processes in the human brain.

*Keywords:* ERP; Perceptual grouping; Proximity; Collinearity; Fronto-Parietal lesion

## Introduction

A basic function of human perceptual system is to organize discrete entities in the visual field into chunks or perceptual units for higher-order processing. Such processes of grouping, that underlying perceptual organization, occur during early stages of vision (Lamy & Tsal, 2001; Vecera & Behrmann, 2001). This proposal is supported by data on where grouping takes place in the brain. For example, animal studies show that neural activity in the primary visual cortex is influenced by collinearity (Kapadia, Ito, Gilbert, & Westheimer, 1995) or common fate (Sugita, 1999) based on information falling both inside and outside the receptive fields of the cells. Human neuroimaging studies also show evidence that the human primary visual cortex is involved in perceptual grouping. For instance, event-related brain potential (ERP) studies of humans have demonstrated that, relative to stimulus arrays in which local elements were distributed evenly in space, stimulus arrays with elements grouped by proximity generated positive-going neural activity at 100 ms after sensory stimulation (Pd100) over the medial occipital cortex (Han, Song, Ding, Yund, & Woods, 2001, 2002). The Pd100 was further localized to the calcarine cortex using dipole modeling in realistic head models and functional magnetic resonance

imaging (fMRI) (Han, Jiang, Mao, Humphreys, & Qin, 2005a, 2005b). Similarly, fMRI studies have identified activation in the striate and extrastriate cortices linked to perceptual grouping by collinearity (Altmann, Bühlhoff, & Kourtzi, 2003; Kourtzi, Tolias, Altmann, Augath, & Logothetis, 2003). Relevant neuropsychological work too shows that grouping by collinearity can be intact when lesions spare the primary visual cortex, but disrupt higher visual areas (Giersch, Humphreys, Boucart, & Kovacs, 2000). Consistent with the localization within the first stage of neural processing, ERP studies demonstrate that the neural activity associated with collinear grouping can occur between 40 and 80 ms after stimulus onset (Khoe, Freeman, Woldorff, & Mangun, 2004; Han, Li, Casco, & Campana, 2007).

Many researchers also assume that, in addition to occurring at early stages of processing, perceptual grouping can operate pre-attentively. Thus there is evidence for grouping by collinearity in the case of patients showing visual extinction, who can be unaware of a stimulus in their contralesional visual fields unless it groups with an ipsilesional partner (Humphreys, 1998; Mattingly, Davis, & Driver, 1997). This fits with the idea that attention selects for higher-order analysis between perceptual objects formed at a pre-attentive stage by grouping operations (Duncan & Humphreys, 1989; Kahneman & Henik,

---

This work was supported by National Natural Science Foundation of China (Project 30630025, 30225026 and 30328016), the Ministry of Science and Technology of China (Project 2002CCA01000), the Medical Research Council (UK), and the Royal Society (UK). We thank Peter Praamstra and Paul Pope for help in EEG data collection.

Address correspondence to Shihui Han, Ph.D., Department of Psychology, Peking University, 5 Yiheyuan Road, Beijing 100871, People's Republic of China. Tel.: +86 10 6275 9138. Fax: +86 10 6276 1081. E-mail: shan@pku.edu.cn

1981; Treisman, 1986), rather than attention facilitating grouping operations to form perceptual units. Nevertheless, there has been evidence that perceptual grouping can be affected by top-down attention. For example, the ability to identify perceptual groups defined by proximity or similarity can be impaired when attention is engaged in a secondary concurrent task (Ben-Av, Sagi, & Braun, 1992; Mack, Tang, Tuma, & Kahn, 1992). Facilitation of the detection of a central Gabor patch (a Gabor patch consists of a sinusoidal contrast modulation convolved with a Gaussian function) by collinear flankers also requires the flankers to be attended (Freeman, Sagi, & Driver, 2001, 2004). Recent neuroimaging studies provide further evidence that interactions between attention and perceptual grouping can take place as early as in human primary visual cortex. For instance, we have recently found that an attentional effect on the integration of collinear Gabor patches can occur as early as 50 ms after stimulus delivery over the occipital area (Wu, Chen, & Han, 2005). Stimulus arrays of Gabor patches elicited a negativity over the posterior occipital cortex at 48–72 ms which was enhanced when attention was allocated along the collinear patches in the stimulus arrays than when attention was directed to the orientation orthogonal to the collinear patches. Having participants attend to the color of a central fixation cross, rather than to more global stimulus patterns, also weakened the early ERP component normally responsive to grouping by collinearity (Han et al., 2007). We have also demonstrated similar modulation of grouping related activities in human primary visual cortex using fMRI, when grouped stimuli are of low relative to high task relevance (Han et al., 2005a, 2005b). These data indicate that grouping operations in the visual cortex are influenced, at least to some degree, by top-down modulation from higher brain structures that control visual attention.

There is now considerable evidence that visual attention is controlled by a fronto-parietal network that provides top-down modulation of activities in early visual areas (Corbetta, 1989). fMRI studies have frequently observed activation of this network in tasks involving orienting of spatial attention (Gitelman et al., 1999; Kim et al., 1999; Nobre et al., 1997; Yantis et al., 2002). Attentional orienting can in turn result in enhanced activity in the visual cortex associated with stimuli presented at attended relative to unattended locations (Gomez Gonzalez, Clark, Fan, Luck, & Hillyard, 1994; Hopfinger, Buonocore, & Mangun, 2000; Mangun & Hillyard, 1991; Martinez et al., 2001; Luck, Chelazzi, Hillyard, & Desimone, 1997). In addition, damage to the fronto-parietal network can lead to impaired spatial orienting to the contralesional field (Posner, Walker, Friedrich, & Rafal, 1984; see Mesulam, 1999 for review) and result in absence of attentional modulation of the visual activities (Han et al., 2004, Han & Jiang, 2004). These findings strongly suggest that the fronto-parietal network plays a major role in modulating perceptual processing in the visual cortex.

In the present paper we tested the role of the fronto-parietal network in the top-down attentional modulation of grouping in the visual cortex, for a range of different Gestalt laws. ERPs were recorded using high-density electrodes from two

patients with fronto-parietal lesions. Similar to our previous ERP studies (Han et al., 2005a, 2005b), participants were presented with stimulus arrays in which local elements were either evenly distributed or grouped into rows or columns, (i) by the proximity or the similarity of the shapes (Experiment 1) or (ii) by the collinearity or similarity of orientation (Experiment 2). The grouping effects were indexed by difference waves that were obtained by subtracting ERPs to the uniform stimuli from ERPs to the grouped stimuli. The grouping effects were first examined by recording ERPs from age-matched healthy subjects. ERPs were then recorded from two patients with fronto-parietal lesions, to assess whether the grouping ERP effects observed in healthy controls, located in undamaged cortex, were nevertheless disrupted by lesions of the fronto-parietal network. If perceptual grouping mediated by the visual cortex is a pure bottom-up process, brain lesions in high-level neural structures such as parietal and frontal cortex should not influence the grouping process in the visual cortex. Otherwise, the grouping process must receive top-down modulations.

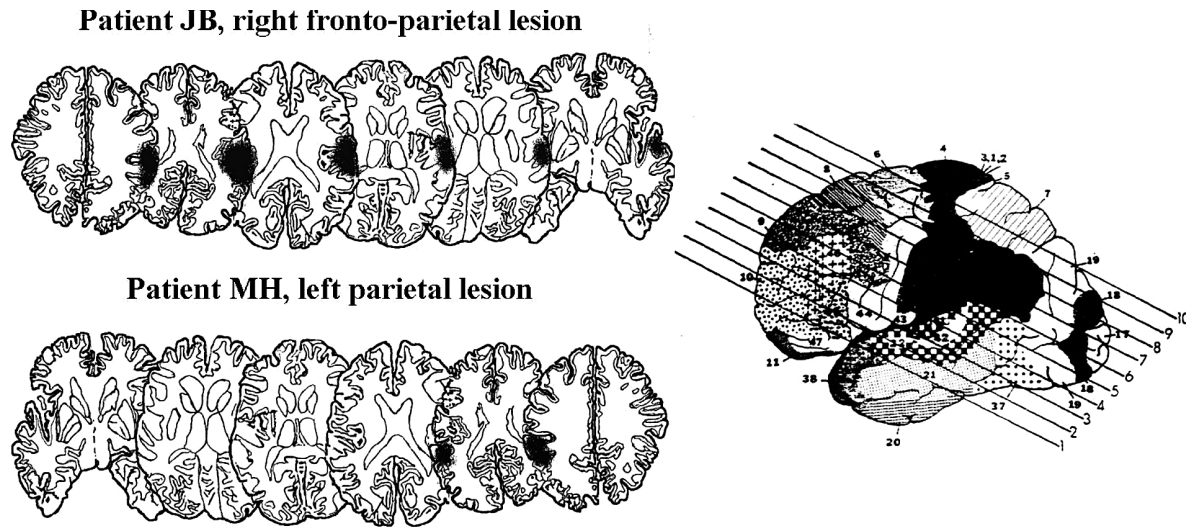
## Methods

### *Participants*

JB, a left-handed housewife born in 1935, suffered a stroke in 1999. A MRI scan showed damage to the inferior parietal and frontal areas of her right hemisphere, including the angular and supra-marginal gyri, the post-central gyrus and the inferior frontal gyrus (see Figure 1). There was also evidence of minor earlier infarct affecting the left occipital lobe, although this had no measurable neuropsychological consequence. JB had left-side neglect in reading and writing and showed left-side extinction on double simultaneous stimulation. JB responded with her right hand in the study.

MH, a right-handed man born in 1951, suffered neural damage following an anoxic incident in 1993. The MRI scan showed damage in the superior parietal area of his left hemisphere, along with damage to the lentiform nucleus bilaterally. He had optic ataxia that was more severe for his right than his left hand, along with some problems in discriminating diagonal line orientations (Riddoch et al., 2004). He also showed right-side extinction with brief visual presentations. MH responded with his left hand in the study.

Eight healthy subjects (three males and five females, aged between 49 and 67 years, mean 61), who were free of any history of neurological or psychiatric problems, participated as controls. Seven of the controls were right handed and one was left handed. All had normal or corrected-to-normal vision. Informed, written consent was obtained from both the patient and controls. This study was approved by the local ethic committee. All the tests reported here were conducted in July 2004. Half of the controls responded with their left hand and half with their right hand.



**Fig. 1.** Illustration of the brain damages of the two patients. MRI scans show JB's lesions in the right fronto-parietal areas and MH's lesions in the left parietal cortex.

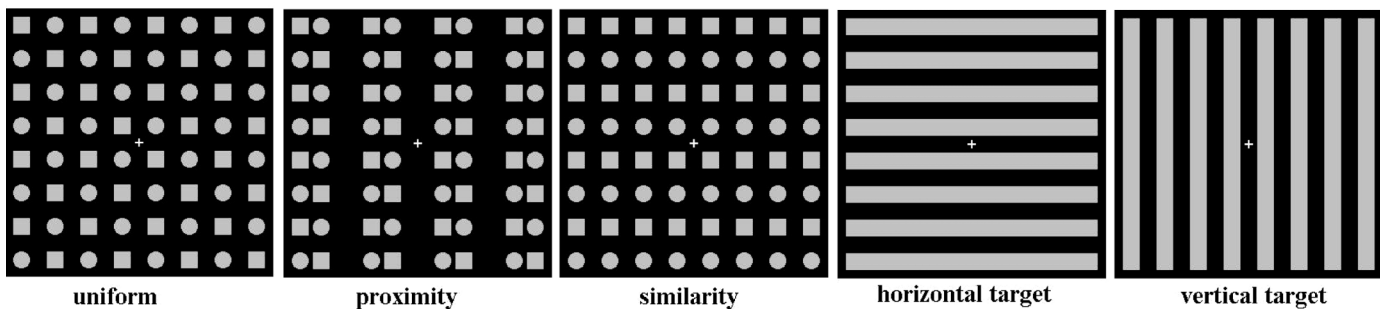
### *Stimuli and procedures*

#### *Experiment 1*

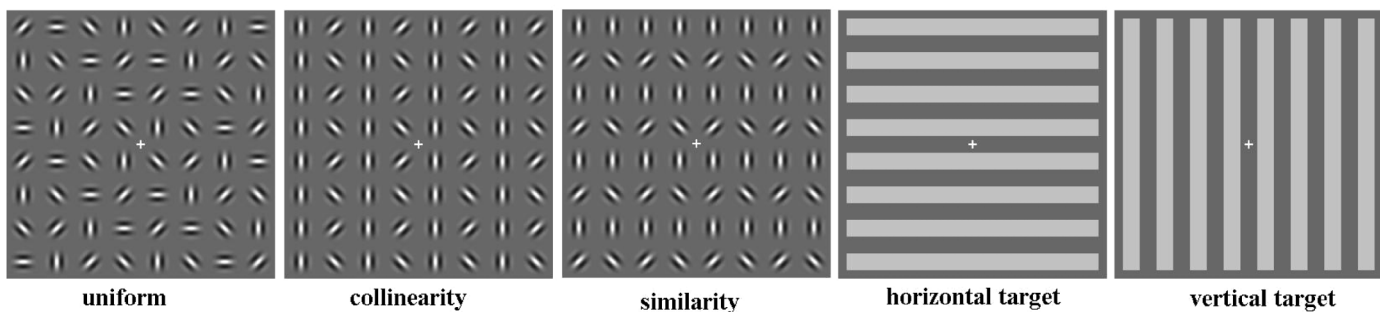
White stimulus elements were presented on a black background on a 17-inch color monitor at a viewing distance of 100 cm. A white fixation cross of  $0.28 \times 0.28^\circ$  (width and

height) was continuously visible in the center of the monitor. Nontarget stimuli consisted of a square lattice of grey elements (either filled circles or squares) in an  $8 \times 8$  array, as shown in Figure 2. The luminance of the grey elements was  $43.2 \text{ cd/m}^2$ . The uniform stimulus consisted of alternate circles and squares distributed evenly across the lattice. This

#### Experiment 1



#### Experiment 2



**Fig. 2.** Illustration of the stimulus arrays in Experiments 1 and 2. In Experiment 1 local circles and squares were white on a black background and grouped into columns or rows based on proximity or shape similarity in the grouped stimuli, whereas the elements were evenly spaced in the uniform stimulus. In Experiment 2 local Gabor patches were presented on a grey background and grouped into columns or rows based on collinearity or similarity of orientation in the grouped stimuli, whereas the elements were evenly spaced in the uniform stimulus. Subjects identified the orientations (vertical vs. horizontal) of the grating in both experiments.

arrangement prevented the local elements from grouping into rows or columns. The proximity-grouped stimuli consisted of alternate circles and squares arranged in arrays to form separate perceptual groups (i.e., rows or columns) by adjusting the distances between two adjacent rows or columns of local elements so that the spaces between two near or remote rows (or columns) were  $0.12^\circ$  and  $0.85^\circ$ , respectively. The similarity-grouped stimuli were made by placing the circles and squares in the uniform stimulus to form rows or columns of elements with the same shape. The distance between two adjacent columns or rows was  $0.40^\circ$  for the uniform and similarity-grouped stimuli. Each local shape subtended an angle of  $0.51^\circ \times 0.51^\circ$  and the global stimulus pattern subtended an angle of  $6.9^\circ \times 6.9^\circ$ . Target stimuli were horizontal and vertical square wave gratings of  $0.51^\circ \times 6.9^\circ$  (width and length). The luminance of the gratings was the same as that of the grey elements in nontarget stimuli. Both the target and the nontarget displays were presented for 150 ms. The interstimulus intervals were randomized between 300 and 700 ms. While maintaining fixation, participants were asked to discriminate orientations of target grating (vertical or horizontal) by pressing one of two keys on a respond pad with index and middle fingers of the left or right hand while ignoring the non-target stimuli. Each subject completed 132 trials for practice, followed by 1320 trials in ten blocks. There were 120 nontarget stimuli and 12 target stimuli in each block of trials.

### Experiment 2

The stimuli and procedure in Experiment 2 were the same as those in Experiment 1 except the following. The background luminance was  $15.9 \text{ cd/m}^2$ . Nontarget stimuli consisted of a square lattice of Gabor patches arranged in an  $8 \times 8$  array (Figure 2). The Gabor patches were orientated either  $0^\circ$ ,  $45^\circ$ ,  $90^\circ$ , or  $135^\circ$  relative to the horizontal meridian of the visual field. Each Gabor patch had a wavelength ( $\lambda$ ) and Gaussian distribution equal to  $0.20^\circ$  of visual angle (spatial frequency, 5.0 cycles per degree), with centre-to-centre separation of  $4\lambda$  ( $0.80^\circ$ ) between two neighbouring Gabor patches. Neighbouring Gabor patches in the vertical or horizontal dimension did not share the same orientation in the uniform stimulus. The collinear grouped stimuli were made by placing vertical Gabor patches into the same column or by placing horizontal Gabor patches into the same row. The similarity-grouped stimuli were made by placing vertical Gabor patches into the same row or by placing horizontal Gabor patches into the same column.

### Data acquisition and analysis

The electroencephalogram (EEG) was recorded with Ag/AgCl electrodes from 128 scalp electrodes relative to the vertex reference. Electrodes were applied to the scalp using carefully positioned nylon cap in accordance with the 10–5 extension of the International 10–20 electrode system (Oostenveld & Praamstra, 2001). Eye blinks and eye movements

were monitored by bipolar horizontal and vertical electro-oculogram (EOG) derivations. EEG signals were amplified by BioSemi Active-One amplifiers with a band pass at 0.16–128 Hz at the sampling rate of 512 Hz. EEG recordings were referenced to linked mastoids. Only ERPs elicited by non-target stimuli were obtained and analyzed. The ERPs in each stimulus condition were averaged separately off-line with averaging epochs beginning 100 ms before stimulus onset and continuing for 600 ms. Trials contaminated by eye blinks, eye movements, or muscle potentials exceeding  $\pm 50 \mu\text{V}$  at any electrode were excluded from the average. ERPs were measured with respect to the mean voltage during the 100-ms pre-stimulus interval. The EEG was averaged to obtain ERPs to nontarget stimuli in different stimulus conditions. The difference waves related to grouping processes were obtained by subtracting ERPs to the uniform stimuli from ERPs to the grouped (proximity, collinearity, or similarity) stimuli. Mean voltage of ERPs and the difference waves were obtained at 20-ms intervals starting at 60 ms after stimulus onset and continuing until 400 ms poststimulus. Because preliminary analyses showed that most of the grouping effects were evident only over the posterior areas, we mainly selected electrodes over these regions for the statistical analysis. Statistical analyses were conducted at each pair of electrode sites over occipital and parietal cortex (O1, O2, OZ, P3, P4, PZ, PO3, PO4, PO7, PO8).

Reaction times, hits, and false alarm rates were subjected to independent-sample *t*-test to compare the behavioral performances between the patients and controls. Similar to a previous study reporting ERPs for small numbers of patients (Vuilleumier et al., 2001), the mean amplitudes of each ERP component in the different conditions were calculated for each of the 10 blocks of trials at posterior electrodes for each patient. A similar procedure was followed for the controls; however, the mean amplitudes in different conditions were obtained by averaging the results of the 10 blocks of trials. To validate grouping effects in the ERP data, ERPs to uniform and grouped (proximity, collinearity, or similarity) nontarget stimuli were first subjected to ANOVAs with the factors being Grouping (proximity or similarity vs. uniform in Experiment 1, collinearity or similarity vs. uniform in Experiment 2) and Hemisphere (electrodes over the left or right hemisphere). To assess the differences in amplitudes of the sensory ERP components between the patients and controls, the mean amplitudes in specific time windows for each early ERP components to stimuli were subjected to ANOVAs with the factors being Subject Group (patients vs. controls) and Hemisphere (electrodes over the left or right hemisphere).

### Results

The behavioral results are summarized in Table 1. On average across both experiments, the participants correctly responded to 92.5% of the targets with a mean false alarm rate of 4.7%. Although the controls' mean reaction times tended to be

**Table 1.** Behavioral data for the patients and controls in Experiments 1 and 2

	Experiment 1		Experiment 2	
	Patients	Controls	Patients	Controls
Reaction times (ms)	1008	854	988	854
Hit (%)	88.3	91.7	95.0	95.0
False alarm (%)	4.2	5.4	4.0	5.2

shorter than those of the patients, reaction times, hits, and false alarms did not differ significantly between the patients and controls in both experiments ( $p > .05$ ), possibly because of the small number of subjects. The behavioral task in the current study was designed to make subjects pay attention to the visual stimuli. The behavioral data recorded were not relevant to the main purpose of this study and thus are not discussed further.

ERPs to nontarget uniform and grouped stimuli in both experiments were characterized for short-latency components with maximum amplitudes over the posterior areas. Figure 3 illustrates the grand averaged ERPs and the difference waves related to grouping recorded at the posterior electrodes from the controls in Experiment 1, where local elements in grouped arrays were integrated into columns or rows by proximity or shape similarity. The ERPs to both uniform and grouped stimuli showed first a positive wave peaking at 90 ms (P1) after stimulus onset, with maximum amplitudes over the occipital regions bilaterally (Figure 3a). The P1 was followed by a negativity peaking at 110 ms (N110) with maximum amplitudes over the medial occipital area, which in turn was followed by a negative component peaking at 180 ms (N180) over bilateral occipital areas. There was also a long-latency positive component peaking at 230 ms (P2) with maximum amplitudes over the parietal area.

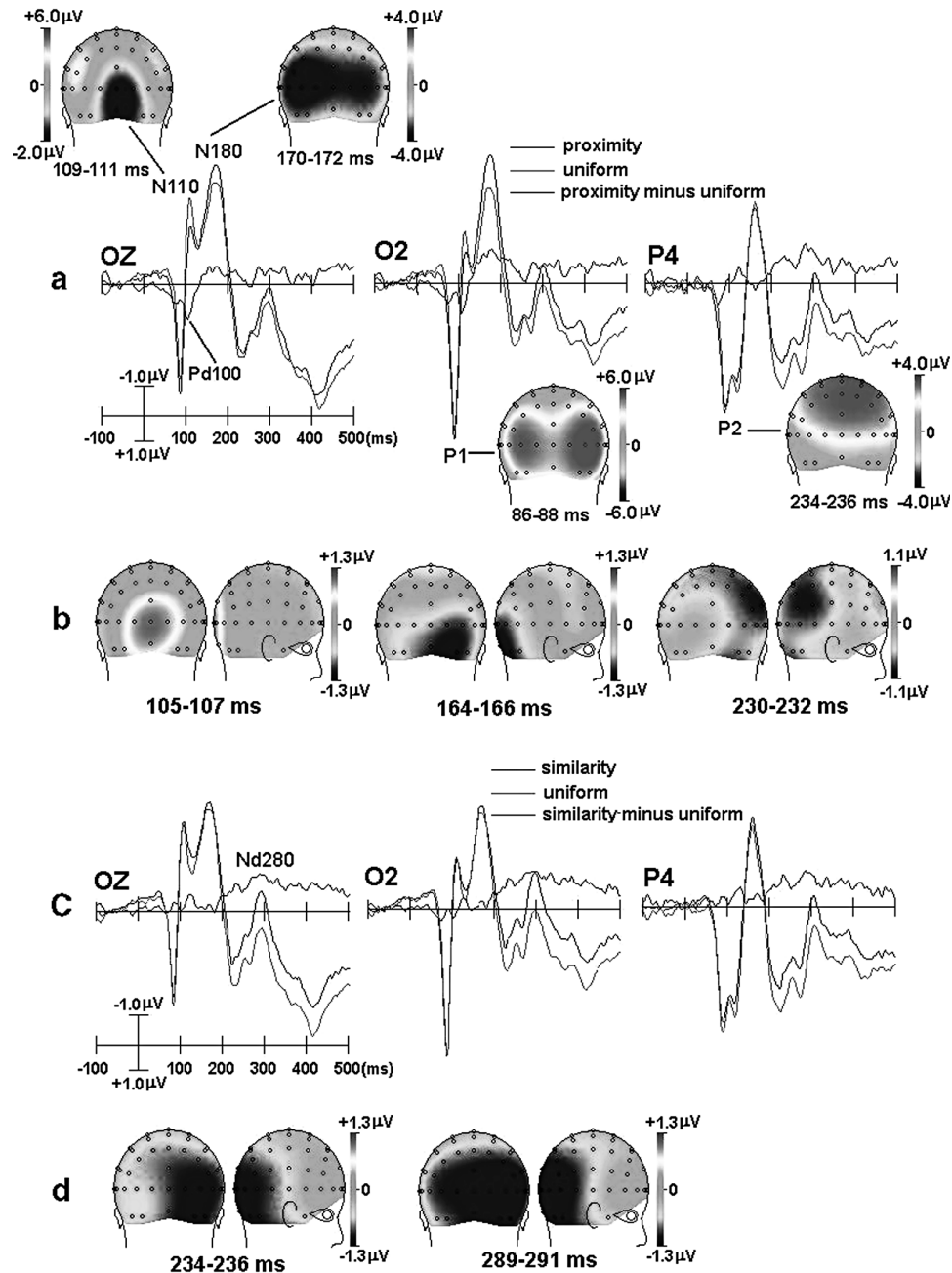
To examine the neural activity specifically related to the process of proximity grouping, we calculated difference waves by subtracting ERPs to the uniform stimulus from those to the proximity-grouped stimuli, which revealed two components. There was first a positivity at 100–120 ms (Pd100) after stimulus onset ( $F(1, 7)=20.9, p < .005$ ) with maximum amplitudes over the posterior medial occipital area. This Pd100 has been reported in our previous ERP studies of young adults and was localized to the calcarine cortex (Han et al., 2001, 2002, 2005a). The Pd100 was followed by two consecutive negativities, the Nd160 between 140 and 180 ms ( $F(1, 7)=5.68, p < .05$ ) over the occipital area and the Nd230 between 220 and 280 ms ( $F(1, 7)=7.95, p < .05$ ) over the parietal area. Both the Nd160 and Nd230 showed larger amplitudes over the right than the left hemisphere ( $F(1, 7)=5.74$  and  $23.3$ , respectively, both  $p < .05$ ). The voltage topographies of the difference waves related to proximity grouping are shown in Figure 3b.

Similarly, we calculated difference waves by subtracting ERPs to uniform stimuli from those to similarity-grouped

stimuli to examine the neural activities related to similarity grouping. Unlike the difference waves related to proximity grouping, the difference wave related for similarity grouping was indexed only by a long-latency negativity between 230 and 320 ms (Nd280,  $F(1, 7)=10.7, p < .01$ ), as shown in Figure 3c. The Nd280 was also of larger amplitude over the right than left hemispheres ( $F(1, 7)=6.45, p < .05$ ). The voltage topographies of the Nd280 showed that the right hemisphere dominance was evident only in the early phase of the Nd280 (Figure 3d).

To investigate whether fronto-parietal lesions influenced the grouping processes observed in healthy subjects, we conducted similar analysis of the ERPs recorded from the patients. Figure 4 illustrates the grand averaged ERPs and the difference waves recorded at the posterior electrodes from the patients in Experiment 1. Unlike the results of the controls, the ERPs from the patients did not show P1 or N180 waves at the occipital electrodes (e.g., OZ and O2, Figure 4). The P1 wave was present at the right parietal electrodes, but was of smaller amplitude relative to that recorded from the controls. The effect of parietal lesions on the P1 amplitude was significant at the occipital electrodes ( $F(1, 8)=7.33, p < .05$ ) and marginally significant at the parieto-occipital electrodes ( $F(1, 8)=3.77, p < .08$ ). Nevertheless, the N110, which showed its largest amplitude over the medial occipital area, was enlarged compared with those recorded from the controls ( $F(1, 8)=5.43, p < .05$ ). The later P2 component showed a similar pattern but did not reach significance. Interestingly, the difference wave related to proximity grouping for the patients showed only a negativity peaking between 180 and 220 ms (Nd190,  $F(1, 1)=352.8, p < .05$ ). This negativity had an occipital focus, larger in the right hemisphere, as illustrated in the voltage topography of the Nd190 (Figure 4a). The difference wave for similarity grouping was also indexed by a negativity peaking at about 240 ms over bilateral occipital areas (Nd240,  $F(1, 1)=617.7, p < .05$ ). Relative to the results of the controls, parietal damage eliminated the early proximity effect over the medial occipital cortex.

To examine the grouping processes determined by collinearity or by similarity of orientation, grand averaged ERPs and the difference waves were calculated from the controls in Experiment 2, as illustrated in Figure 5. The ERPs to both uniform and grouped stimuli showed a positivity peaking at 100 ms (P1) after stimulus onset, with maximum amplitudes over the occipital areas bilaterally (Figure 5a). The P1 wave was followed by a negativity peaking at 130 ms (N130) with maximum amplitudes over the medial occipital area, which in turn was followed by a long-latency positive component peaking at 230 ms (P2), with maximum amplitudes over the posterior occipital area. We also calculated difference waves by subtracting ERPs to uniform stimuli from those to collinearity-grouped stimuli to examine the neural activities related to collinearity grouping. The difference waves specific to collinearity grouping were characterized by two consecutive negativities between 130 and 150 ms (Nd130,  $F(1, 7)$

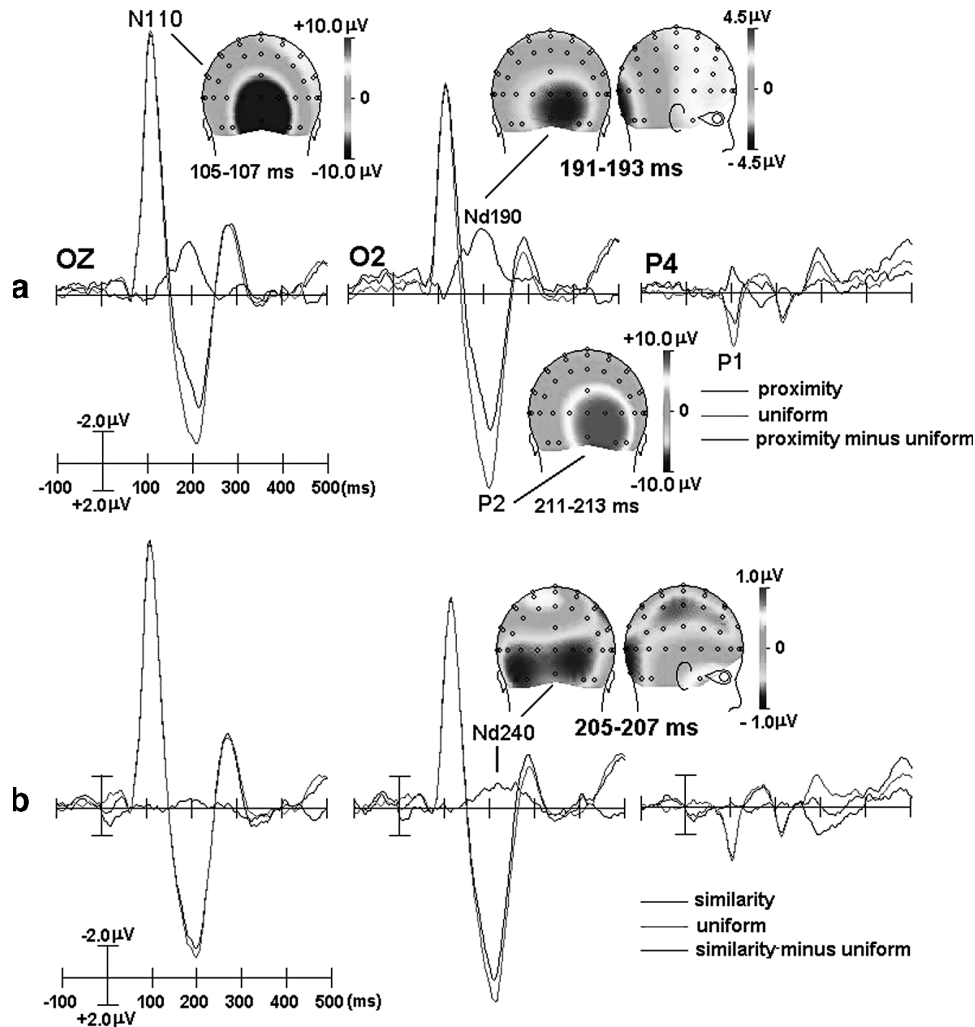


**Fig. 3.** ERP results of the controls in Experiment 1. (a) Illustration of ERPs, voltage topographies of each ERP component to the uniform stimulus, and the difference waves related to proximity grouping; (b) voltage topographies of the difference waves related to proximity grouping; (c) illustration of ERPs and the difference waves related to similarity grouping; (b) voltage topographies of the difference waves related to similarity grouping.

$=9.41$ ,  $p < .05$ ) and between 220 and 280 (Nd240,  $F(1, 7) = 9.99$ ,  $p < .01$ ), respectively. The Nd130 showed maximum amplitudes over the medial occipito-parietal area, whereas the Nd240 showed maximum amplitudes over bilateral occipital areas. The difference waves related to similarity grouping in Experiment 2 also showed a negative deflection; however, this effect did not reach significance ( $p > .05$ ).

To investigate whether fronto-parietal lesions influenced the grouping processes determined by collinearity, we

conducted similar analysis of the ERPs recorded from the patients in Experiment 2. Figure 6 illustrates the grand averaged ERPs and the difference waves recorded at the posterior electrodes from the patients in Experiment 2. The ERPs recorded from the patients did not show the P1 wave at the occipital electrodes (e.g., OZ and O2). The P1 was present at the right parietal electrodes, but was of smaller amplitude relative to that recorded from the controls. The effect of parietal damage on the P1 component was significant at occipital



**Fig. 4.** ERP results of the patients in Experiment 1. (a) Illustration of ERPs, voltage topographies of each ERP component to the uniform stimulus, and the difference waves related to proximity grouping; (b) illustration of ERPs, the difference waves related to similarity grouping, and voltage topographies of the difference waves related to similarity grouping.

electrodes ( $F(1, 8)=5.14, p < .05$ ). The N130 and the following P2 showed larger amplitudes relative to those recorded from the controls. However, these effects did not reach significance ( $p > .05$ ). Noticeably, there were no significant grouping effects in the ERP results for either collinearity or similarity grouping ( $p > .05$ ). This indicates that the fronto-parietal damage in these patients seriously reduced the early grouping effects in the occipital areas that were undamaged in the patients. MH had not damage to occipital cortex. JB had minor left occipital damage but failed to show attention-enhanced grouping effects even in her spared right occipital regions.

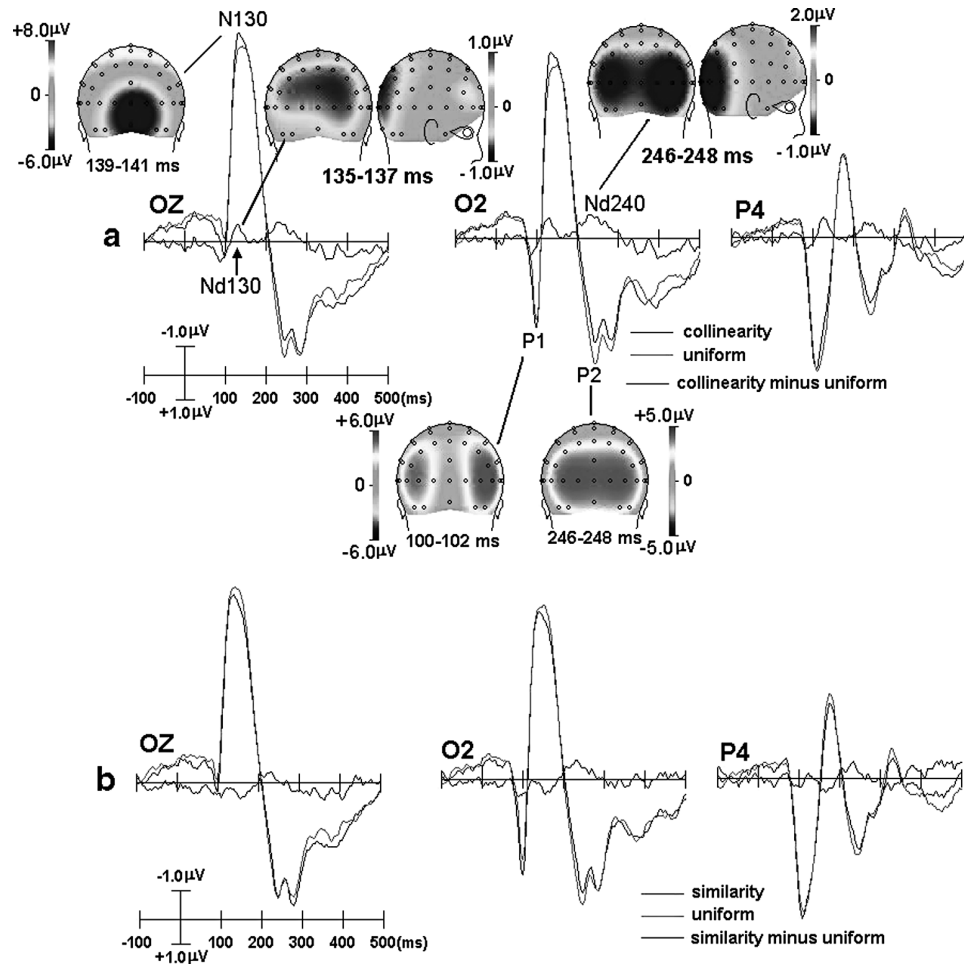
## Discussion

The fronto-parietal network is involved in a variety of visual selective attention tasks, including attention to spatial

location (Gitelman et al., 1999; Kim et al., 1999; Nobre et al., 1997) and to objects (Fink, Dolan, Halligan, Marshall, & Frith, 1997). There is also evidence for the engagement of this network in attentional modulation of neural activities in the visual cortex. While the visual activity was enhanced to stimuli at attended than unattended locations in healthy subjects, these attentional effects were reduced in patients with parietal lesions (Han et al., 2004; Han & Jiang, 2004). The current work studied the effects of fronto-parietal lesions on perceptual grouping in the visual cortex, using high-density ERPs to examine early grouping effects in controls and two patients with primarily fronto-parietal and parietal damage, respectively. Similar to our previous ERP studies (Han et al., 2001, 2002, 2005a, 2005b), grouping processed were indexed by difference waves obtained by subtracting ERPs to grouped arrays vs. those to evenly distributed elements.

In Experiment 1, proximity grouping in controls was first indexed by a positivity over the medial occipital cortex



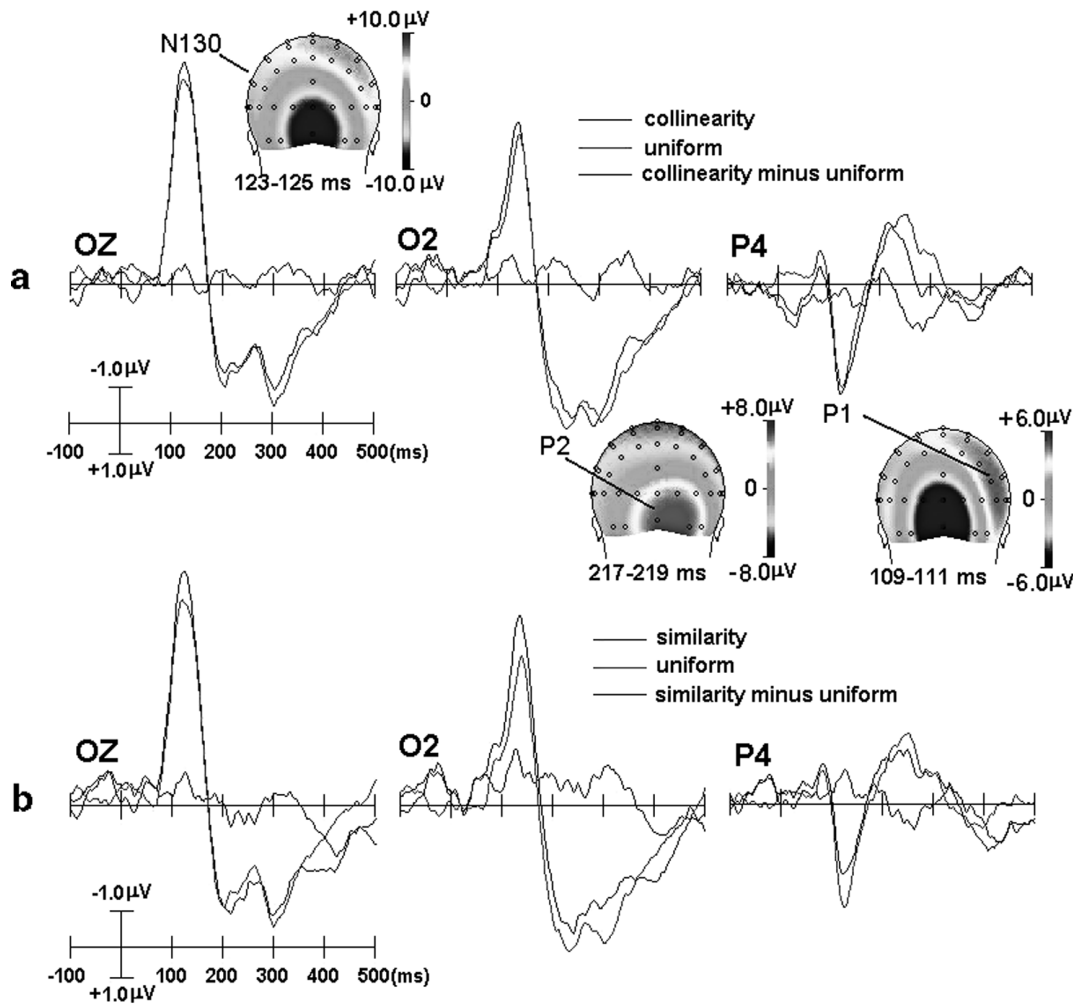


**Fig. 5.** ERP results of the controls in Experiment 2. (a) Illustration of ERPs, the difference waves related to collinear grouping, voltage topographies of each ERP component to the uniform stimulus, and voltage topographies of the difference waves related to collinear grouping; (b) illustration of ERPs, the difference waves related to similarity grouping, and voltage topographies of the difference waves related to similarity grouping.

(Pd100).<sup>1</sup> Such early grouping effect has been reported in previous studies of young adults and has been localized to the

<sup>1</sup>One may notice that, besides grouping local items into columns or rows, the grouped stimuli were also different from the uniform stimulus in other aspects such as the amount of overall spacing between the elements or clustering of the elements. The latter factors might contribute to the ERP grouping effects observed in the current study. Our previous ERP study (Han et al., 2001) examined the grouping ERP effects when removing other differences between uniform and grouping stimuli such as amount of overall spacing between the elements or clustering of the elements. In this study, local elements were defined by motion contrast. The background was composed of randomly moving dots. Local circles and squares were made up of stationary random dots. Such design made grouped and uniform stimuli were equal in amount of overall spacing between the elements or clustering of the elements. However, under these circumstances, we still observed similar grouping ERP effect, suggesting the factors such as amount of overall spacing between the elements contributed little to the ERP grouping effects.

calcarine cortex (Han et al., 2001, 2002, 2005a). In replicating this, the present results suggest that the calcarine cortex participates in the early stage of grouping by proximity for both young and elderly adults. Similarly to the previous work, we also found long-latency negativities over the right occipito-parietal areas in association with the proximity grouping. However, the ERP results for the patients were significantly different from this. The patients only showed a long-latency negativity over the right occipital area when proximity grouping took place. Thus any evidence for early proximity grouping over the medial occipital cortex was eliminated. This result implies that the early proximity-grouping operation in the visual cortex depended greatly upon the top-down influence from the fronto-parietal attentional network. Prior behavioral studies have shown that the identification of perceptual groups defined by proximity is seriously impaired when attention is drawn away from the stimuli (Ben-Av et al., 1992; Mack et al., 1992). Our recent neuroimaging studies have shown evidence that the early grouping operation in the calcarine cortex indexed by the



**Fig. 6.** ERP results of the patients in Experiment 2. (a) Illustration of ERPs and voltage topographies of each ERP component to the uniform stimulus, and the difference waves related to collinear grouping; (b) illustration of ERPs and the difference waves related to similarity grouping.

Pd100 is modulated by top-down attention (Han et al., 2005a). The Pd100 is significantly reduced when the features making up the perceptual groups were of low rather than of high task relevance. In addition, the Pd100 was also influenced by the size of spatial attentional window, being present when grouped stimulus arrays fell inside the attended area but eradicated when grouped stimulus arrays fell outside the attended area. Here the comparison of ERPs between the patients with fronto-parietal lesions and the healthy controls suggests that the fronto-parietal cortex is necessary for the early grouping operations to occur in the visual cortex.

In contrast, the parietal lesions produced less effect on the long-latency grouping effects. The difference waves related to the proximity grouping from both the patients and the controls showed negativities over the occipito-parietal area. Likewise, grouping by similarity of shape was indexed by long-latency negativities for both the patients and the controls. The results suggest that, relative to the early grouping process indexed by the Pd100, grouping operations at the

later stage of visual perception are less vulnerable to the fronto-parietal lesions. Thus any feedback from higher order brain structures produces less influence on the long than the short latency grouping operations.

Several accounts of these differential effects can be offered. One is that the late grouping effects operate in a relatively automatic and bottom-up manner. This bottom-up grouping is slow relative to grouping processes enhanced by top-down feedback. These slow, automatic grouping processes may be responsible for the grouping effects evident in the patients showing extinction, whose contralesional elements are perceived only when they group with ipsilesional stimuli (Humphreys, 1998; Mattingly et al., 1997). An alternative account is that early and late grouping operations alike are dependent on top-down processes, but late grouping depends on feedback from brain regions other than the fronto-parietal cortex, and so remains intact after fronto-parietal lesions. A third possibility is that the initial grouping operation in the calcarine cortex functions to link the local

elements into larger ‘chunks’ whereas the late grouping operations function to process the features of the perceptual groups (e.g., orientation in this study) in other brain areas. The functional roles of the early and late grouping processes require different feedback from the parietal cortex, which facilitates mainly the initial segmentation operation.

Similar effects of fronto-parietal lesions on grouping by collinearity were observed in Experiment 2. The collinear grouping effects in the controls were indexed by an early Nd130 over the medial occipital area and a late Nd250 over the occipital cortex bilaterally. However, non-collinear Gabor patches that were similar in orientation did not generate significant ERP grouping effect, suggesting that similarity of one simple feature (i.e., orientation in Experiment 2) was not as strong a grouping cue as similarity of shape in Experiment 1. We recently found that, for young adults who were presented with similar stimulus arrays as those in the current study, the collinear grouping effect could occur at 40–80 ms after stimulus delivery indexed by a positivity over the medial occipital area. There was also a long-latency negativity over bilateral occipital areas in association with collinear grouping (Han et al., 2007). Thus our data with older controls here suggest that age alone may lead to a weakening/slowing of the early grouping effect (though, unlike with patients with fronto-parietal lesions, the effect remains). This is consistent with the ERP studies with younger adults where an enlarged early component has been observed (80 ms post-stimulus) when fewer Gabor patches were presented in each stimulus array (Khoe et al., 2004), so that weaker grouping takes place.

In Experiment 2, both short- and long-latency grouping effects were eliminated in the patients. The elimination of the early grouping effect was similar to that in Experiment 1 although both the polarity and time window of the early grouping effect differed across the experiments. Therefore, it may be concluded that the early grouping operation in the medial visual cortex depends upon the normal function of the fronto-parietal cortex regardless of what principles determine grouping. In other words, top-down modulation of grouping in the visual cortex, produced by the fronto-parietal network, may be generalized to any form of grouping operation in the medial visual cortex. The loss of the long latency grouping effect related to collinear grouping suggest that, unlike grouping by proximity and grouping by shape similarity, grouping by collinearity requires top-down feedback from the fronto-parietal network even at a later stage of grouping. The loss of the late grouping effect related to similarity grouping in Experiment 2 suggests that grouping by similarity of orientation is relatively weak in the first place, and not as strong as grouping by similarity of shape which took place in Experiment 1 (when long latency grouping was maintained in the patients).

Interestingly, we found that, relative to the ERP results from the controls, the patients’ ERPs showed a reduced stimulus-evoked P1 component over bilateral occipital cortex. Similar reduction in the P1 are reported in prior studies of

patients with parietal (Han & Jiang, 2004) and prefrontal lesions (Barceló, Suwazono, & Knight, 2000). Because prior studies have localized the P1 component to the lateral extrastriate cortex (Gomez Gonzalez et al., 1994; Clark & Hillyard, 1996; Heinze et al., 1994; Woldorff et al., 1997), the effects of brain lesions on the P1 amplitude implicate that there is regulation of initial visual processing in the extrastriate cortex by more anterior regions as early as 100 ms after sensory stimulation. Nevertheless, we observed enlarged N110 and P2 effects in the patients relative to the controls. Both Experiments 1 and 2 showed such N110 and P2 enhancement although the effects were significant only in Experiment 1. These results suggest that top-down modulation of the sensory processing produced by the fronto-parietal network does not act simply to enhance neural activity at all stages of sensory processing. The fronto-parietal cortex contributes to the enhancement of initial sensory processing in the extrastriate activities. At later stages of sensory processing, however, the fronto-parietal network suppresses the neural activity in the visual cortex. Thus damage to the attentional network results in differential effects on sensory processing in different time windows. On the one hand, the damaged fronto-parietal network fails to augment initial sensory processing in the extrastriate cortex. On the other hand, the damaged fronto-parietal network releases the inhibition of the sensory processing at a later time period as suggested by the enhanced N110 observed in the patients. A functional role of such inhibition of sensory processing is to provide a low-level background of neuronal activity so that perceptual processing (including perceptual grouping) based on differential neuronal responses can be easily distinguished. Once inhibitory mechanisms implement by the fronto-parietal network are damaged, the neuronal responses associated with sensory processing are increased abnormally and perceptual processing dependent upon the differential sensory processing is then weakened or eliminated.

The enlarged N110 and P2 components in the patients relative to the controls showed a medial occipital distribution, which overlapped with the locus of the grouping effects observed in both experiments. This fact indicates that the sensory visual activity occurring in the visual cortex that underpinned perceptual grouping was not influenced by the fronto-parietal damage. It follows that the elimination of the grouping ERP effects could not simply arise from the general dysfunction of the visual cortex although one patient showed minor earlier infarct in the left occipital lobe. Because the current study only tested patients with fronto-parietal lesions, our results could not tell if lesions in other brain areas may induce similar effects. However, our recent combined transcranial magnetic stimulation (TMS) and ERP research (Han, Zhou, & Wang, 2005c) showed evidence that only a limited number of brain areas rather than all high-level brain structures are involved in top-down modulation of early sensory/perceptual processing. In this study, we used TMS to disrupt the activity in the left/right parietal cortex and in the precentral gyrus. We found that, relative to the

condition of no TMS, disruption of the left/right parietal cortex reduced the amplitude of the early extrastriate activity. Disruption of the precentral gyri, however, did not influence the early visual activity such as the P1 component compared with when no TMS was applied. These results suggest that it is unlikely that disruption or damage of any brain areas would produce similar effect on the early visual sensory/perceptual processing. Further research is required to examine whether early perceptual grouping receives top-down modulation from brain areas outside the frontal and parietal lobes.

Previous research has shown abundant evidence for top-down effects in visual perception. For example, the early sensory/perceptual processing indexed by early ERP components (i.e., the P1 and N1 waves) are strongly modulated by visual attention, being enlarged to the stimuli at attended relative to at unattended locations (Gomez Gonzalez et al., 1994; Clark & Hillyard, 1996; Heinze et al., 1994; Woldorff et al., 1997). Deficits of simple shape recognition is observed in patients with prefrontal lesions (Barceló et al., 2000). Face recognition is also susceptible to top-down influences (Puce, Allison, & McCarthy, 1999). Possible neural mechanisms have been proposed to interpret how the top-down effects on early process of visual perception and recognition are produced. von Stein, Chiang, and König (2000) suggest that corticocortical synchronization within a middle-frequency range (4–12 Hz) may play a key role in top-down processes. Bar et al. (2003, 2006) further suggest that a partially analyzed version of the input images represented in low spatial frequencies in early visual areas is projected to the prefrontal cortex to initiate top-down processes projected from the prefrontal to visual cortex. Such mechanisms may also play a role in top-down modulation of the process of perceptual grouping, though this needs to be confirmed in future research.

Finally, the present results raise the question of the nature of top-down effects on the grouping processes, since the present evidence is that these effects occur early in the visual processing stream (i.e., in striate and extrastriate cortex). To account for this, we suggest that the fronto-parietal network maintains a tonic state that provides rapid enhancement of processing within attended areas of field and on features that are primed as being task relevant. This tonic state can generate early enhancement without requiring feed forward and feedback operations that themselves may take considerable time.

In sum, the current ERP studies of patients with fronto-parietal damage provide evidence that human fronto-parietal network facilitates early grouping operations in the visual cortex. This facilitation occurs regardless of whether the grouping processes are defined by proximity or collinearity. The fronto-parietal cortex also facilitates long-latency grouping based on the similarity of orientations of local elements. In addition, the fronto-parietal modulation of the sensory processing varies as a function of the time course of visual processing. Top-down processing influences from the network

enhance initial sensory processes but inhibit sensory processing at a later stage.

Original manuscript received 20 January 2006

Revised manuscript accepted 23 August 2007

First published online 30 October 2007

## References

- Altmann, C. F., Bühlhoff, H. H., & Kourtzi, Z. (2003). Perceptual organization of local elements into global shapes in the human visual cortex. *Current Biology*, *13*, 342–349.
- Bar, M. (2003). A cortical mechanism for triggering top-down facilitation in visual object recognition. *Journal of Cognitive Neuroscience*, *15*, 600–609.
- Bar, M., Kassam, K. S., Ghuman, A. S., Boshyan, J., Schmid, A. M., Dale, A. M., Hamalainen, M. S., Marinkovic, K., Schacter, D. L., Rosen, B. R., & Halgren, E. (2006). Top-down facilitation of visual recognition. *Proceedings of National Academy of Sciences, USA*, *103*, 449–454.
- Ben-Av, M. B., Sagi, D., & Braun, J. (1992). Visual attention and perceptual grouping. *Perception & Psychophysics*, *52*, 277–294.
- Barceló, F., Suwazono, S., & Knight, R. T. (2003). Prefrontal modulation of visual processing in humans. *Nature Neuroscience*, *3*, 399–403.
- Clark, V. P., & Hillyard, S. A. (1996). Spatial selective attention affects early extrastriate but not striate components of the visual evoked potential. *Journal of Cognitive Neuroscience*, *8*, 387–402.
- Corbetta, M. (1998). Frontoparietal cortical networks for directing attention and the eye to visual locations: identical, independent, or overlapping neural systems? *Proceedings of National Academy of Sciences, USA*, *95*, 831–838.
- Duncan, J., & Humphreys, G. W. (1989). Visual search and stimulus similarity. *Psychological Review*, *96*, 433–458.
- Fink, G. R., Dolan, R. J., Halligan, P. W., Marshall, J. C., & Frith, C. D. (1997). Space-based and object-based visual attention: shared and specific neural domains. *Brain*, *120*, 2013–2028.
- Freeman, E., Sagi, D., & Driver, J. (2004). Later interactions between targets and flankers in low-level vision depend on attention to the flankers. *Nature Neuroscience*, *4*, 1032–1036.
- Freeman, E., Sagi, D., & Driver, J. (2004). Configuration-specific Attentional modulation of flanker-target lateral interactions. *Perception*, *33*, 181–194.
- Giersch, A., Humphreys, G. W., Boucart, M., & Kovacs, I. (2000). The computation of occluded contours in visual agnosia: Evidence for early computation prior to shape binding and figure-ground coding. *Cognitive Neuropsychology*, *17*, 731–759.
- Gitelman, D. R., Nobre, A. C., Parrish, T. B., LaBar, K. S., Kim, Y., Meyer, J. R., & Mesulam, M. (1999). A large-scale distributed network for covert spatial attention. *Brain*, *122*, 1093–1106.
- Gomez Gonzalez, C. M., Clark, V. P., Fan, S., Luck, S. J., & Hillyard, S. A. (1994). Sources of attention-sensitive visual event-related potentials. *Brain Topography*, *7*, 41–51.
- Han, S., & Jiang, Y. (2004). The parietal cortex and attentional modulations of activities of the visual cortex. *NeuroReport*, *15*, 2275–2280.
- Han, S., Song, Y., Ding, Y., Yund, E. Y., & Woods, D. L. (2001). Neural substrates for visual perceptual grouping in human. *Psychophysiology*, *38*, 926–935.
- Han, S., Song, Y., & Ding, Y. (2002). Neural mechanisms of perceptual grouping in humans as revealed by high density event related potentials. *Neuroscience Letter*, *319*, 29–32.
- Han, S., Jiang, Y., Gu, H., Rao, H., Mao, L., Cui, Y., & Zhai, R. (2004). The role of human parietal cortex in attention networks. *Brain*, *127*, 650–659.
- Han, S., Jiang, Y., Mao, L., Humphreys, G. W., & Qin, J. (2005a). Attentional modulation of perceptual grouping in human visual cortex: ERP studies. *Human Brain Mapping*, *26*, 199–209.

- Han, S., Jiang, Y., Mao, L., Humphreys, G. W., & Gu, H. (2005b). Attentional modulation of perceptual grouping in human visual cortex: fMRI studies. *Human Brain Mapping, 25*, 424–432.
- Han, S., Zhou, W., & Wang, C. (2005c). Human parietal cortex and attentional modulation of visual activities: A combined TMS and ERP study. *Perception, 34*(Suppl.), 182.
- Han, S., Li, Q., Casco, C., & Campana, G. (2007). Neural mechanisms of top-down modulation of perceptual grouping by collinearity. Manuscript under review.
- Heinze, H. J., Mangun, G. R., Burchert, W., Hinrichs, H., Scholz, M., Munte, T. F., Gos, A., Scherg, M., Johannes, S., & Hundeshagen, H. (1994). Combined spatial and temporal imaging of brain activity during visual selective attention in humans. *Nature, 372*, 543–546.
- Hopfinger, J. B., Buonocore, M. H., & Mangun, G. R. (2000). The neural mechanisms of top-down attentional control. *Nature Neuroscience, 3*, 284–291.
- Humphreys, G. W. (1998). Neural representation of objects in space: A dual coding account. *Philosophical Transactions of the Royal Society B: Biological Science, 353*, 1341–1351.
- Kahneman, D., & Henik, A. (1981). Perceptual organization and attention. In M. Kubovy & J. Pomerantz (Eds), *Perceptual organization* (pp. 181–211). Hillsdale, NJ: Erlbaum.
- Kapadia, M. K., Ito, M., Gilbert, C. D., & Westheimer, G. (1995). Improvement in visual sensitivity by changes in local context: parallel studies in human observers and in V1 of alert monkeys. *Neuron, 15*, 843–856.
- Khoe, W., Freeman, E., Woldorff, M. G., & Mangun, G. R. (2004). Electrophysiological correlates of lateral interactions in human visual cortex. *Vision Research, 44*, 1695–1673.
- Kim, Y. H., Gitelman, D. R., Nobre, A. C., Parrish, T. B., LaBar, K. S., & Mesulam, M. M. (1999). The large-scale neural network for spatial attention displays multifunctional overlap but differential asymmetry. *NeuroImage, 9*, 269–277.
- Kourtzi, Z. K., Tolias, A. S., Altmann, C. F., Augath, M., & Logothetis, N. K. (2003). Integration of local features into global shapes: Monkey and human fMRI studies. *Neuron, 37*, 333–346.
- Lamy, D., & Tsal, Y. (2001). On the status of location in visual attention. *European Journal of Cognitive Psychology, 13*, 305–402.
- Luck, S. J., Chelazzi, L., Hillyard, S. A., & Desimone, R. (1997). Neural mechanisms of spatial selective attention in areas V1, V2, and V4 of macaque visual cortex. *Journal of Neurophysiology, 77*, 24–42.
- Mack, A., Tang, B., Tuma, R., & Kahn, S. (1992). Perceptual grouping and attention. *Cognitive Psychology, 24*, 475–501.
- Mattngly, J. B., Davis, G., & Driver, J. (1997). Pre-attentive filling-in of visual surfaces in parietal extinction. *Science, 275*, 671–674.
- Mangun, G. R., & Hillyard, S. A. (1991). Modulations of sensory-evoked brain potentials indicate changes in perceptual processing during visual-spatial priming. *Journal of Experimental Psychology: Human Perception and Performance, 17*, 1057–1074.
- Martinez, A., DiRusso, F., Anllo-Vento, L., Sereno, M. I., Buxton, R. B., & Hillyard, S. A. (2001). Putting spatial attention on the map: timing and localization of stimulus selection processes in striate and extrastriate visual areas. *Vision Research, 41*, 1437–1457.
- Mesulam, M. M. (1999). Spatial attention and neglect: parietal, frontal and cingulate contributions to the mental representation and attentional targeting of salient extrapersonal events. *Philosophical Transactions of the Royal Society B: Biological Science, 354*, 1325–1346.
- Nobre, A. C., Sebestyen, G. N., Gitelman, D. R., Mesulam, M. M., Frackowiak, R. S., & Frith, C. D. (1997). Functional localization of the system for visuospatial attention using positron emission tomography. *Brain, 120*, 515–533.
- Oostenveld, R., & Praamstra, P. (2004). The 5% electrode system for high-resolution EEG and ERP measurement. *Clinical Neurophysiology, 112*, 713–719.
- Posner, M. I., Walker, J. A., Friedrich, F. J., & Rafal, R. D. (1984). Effects of parietal injury on covert orienting of attention. *Journal of Neuroscience, 4*, 1863–1874.
- Puce, A., Allison, T., & McCarthy, G. (1999). Electrophysiological studies of human face perception. III: Effects of top-down processing on face-specific potentials. *Cerebral Cortex, 9*, 445–458.
- Riddoch, M. J., Humphreys, G. W., Jacobson, S., Pluck, G., Bateman, A., & Edwards, M. G. (2004). Impaired orientation discrimination and localization following parietal damage: On the interplay between dorsal and ventral processes in visual perception. *Cognitive Neuropsychology, 21*, 597–624.
- von Stein, A., Chiang, C., & König, P. (2000). Top-down processing mediated by interareal synchronization. *Proceedings of National Academy of Sciences, USA, 97*, 14748–14753.
- Sugita, Y. (1999). Grouping of image fragments in primary visual cortex. *Nature, 401*, 269–272.
- Treisman, A. (1986). Properties, parts, and objects. In K. R. Boff, L. Kaufman, & J. P. Thomas (Eds), *Handbook of perception and human performance* (Chapter 35: pp. 1–70). New York: John Wiley & Sons.
- Vecera, P. V., & Behrmann, M. (2001). Attention and unit formation: A biased competition account of object-based attention. In T. F. Shipley, & P. J. Kellman (Eds), *From fragments to objects – Segmentatin and grouping in vision* (pp. 145–182). London: Elsevier.
- Vuilleumier, P., Sagiv, N., Hazeltine, E., Poldrack, R. A., Swick, D., & Rafal, R. D. (2001). Neural fate of seen and unseen faces in visuospatial neglect: A combined event-related functional MRI and event-related potential Study. *Proceedings of National Academy of Sciences, USA, 98*, 3495–3500.
- Woldorff, M. G., Fox, P. T., Matzke, M., Lancaster, J. L., Veeraswamy, S., Zamarripa, F., Seabolt, M., Glass, T., Gao, J. H., Martin, C. C., & Jerabek, P. (1997). Retinotopic organization of early visual spatial attention: effects as revealed by PET and ERP data. *Human Brain Mapping, 5*, 280–286.
- Wu, Y., Chen, J., & Han, S. (2005). Neural mechanisms of attentional modulation of perceptual grouping by collinearity. *NeuroReport, 16*, 567–570.
- Yantis, S., Schwarzbach, J., Serences, J. T., Carlson, R. L., Steinmetz, M. A., Pekar, J. J., & Courtney, S. M. (2002). Transient neural activity in human parietal cortex during spatial attention shifts. *Nature Neuroscience, 5*, 995–1002.